

Introduction

Certain experiments require rear access to the sample plate. The central opening (through hole) allows also for electron bombardement or laser heating of the sample plate. The sample plate is secured by four ruby spheres which are pressed against the bottom side of the sample plate by a leaf spring.

Description	Part Code
Receptacle with rear access for M-SHOM sample plates - stainless steel	M-RECOMRA(ST)
Receptacle with rear access for M-SHOM sample plates - molybdenum	M-RECOMRA(MO)

Specifications:

Fully UHV compatible

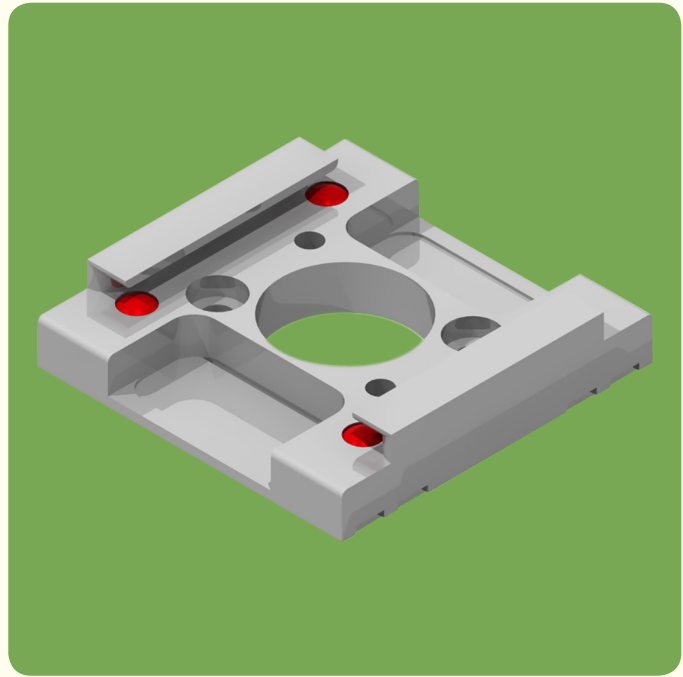
Non magnetic versions

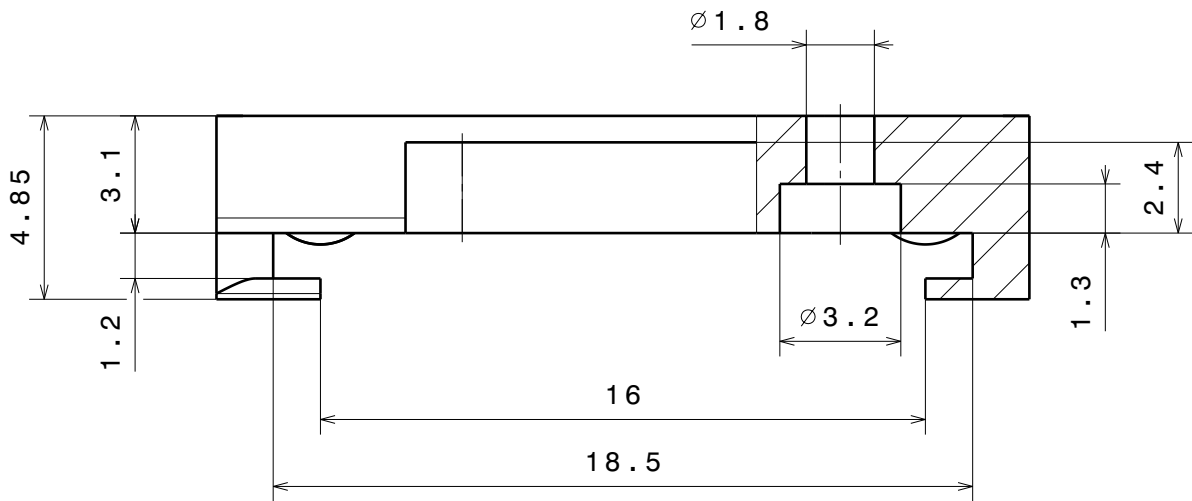
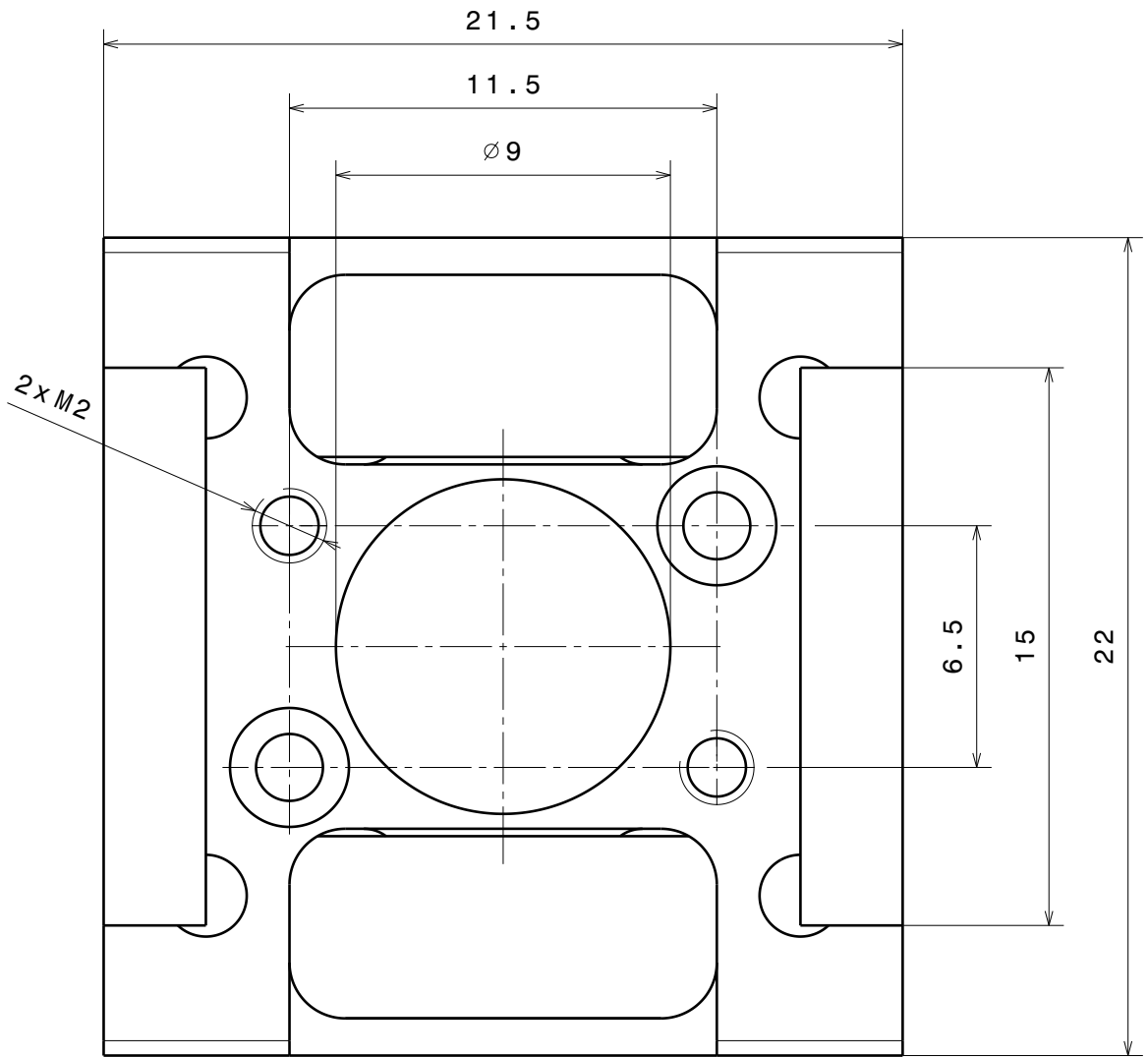
Cryogenic versions

High temperature versions

Ultra high temperature versions

Dicronite™ dry lube coating optional





Material: according to order

Receptacle with rear access for SHOM
sample plates

RECOMRA

Ferrovac GmbH
CH-8050 Zurich

THE INFORMATION CONTAINED IN THIS
DRAWING IS THE SOLE PROPERTY OF
FERROVAC GMBH. ANY REPRODUCTION
IN PART OR AS WHOLE WITHOUT OUR
PERMISSION IS PROHIBITED.

nominal dimension	over up to	1	6	30	100	300	1000
tolerance	±	0.05	0.1	0.3	0.5	0.8	1.2

Scale

Drawn

M. Nyirö

Date

04.01.2011

Revised

.....

5:1

RECOMRA

sheet 1/2