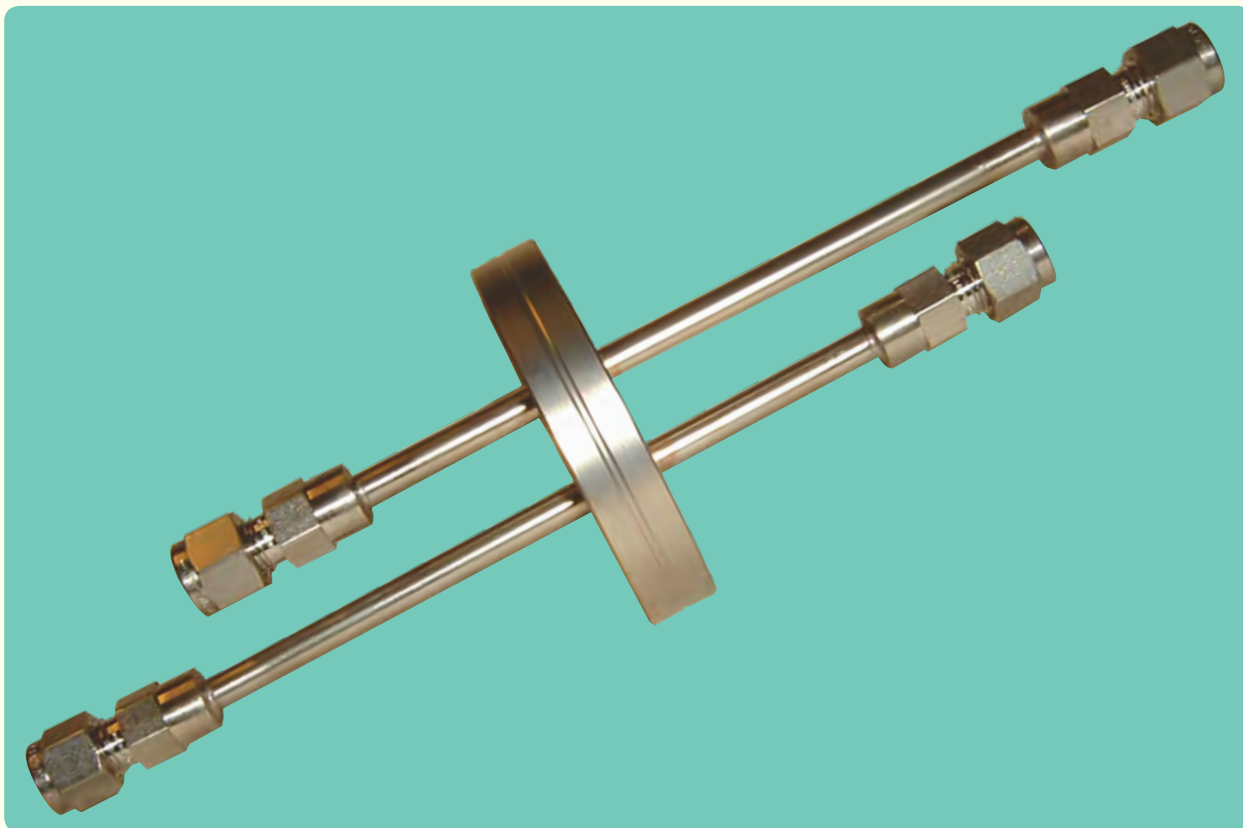


Liquid & Gas Feedthroughs



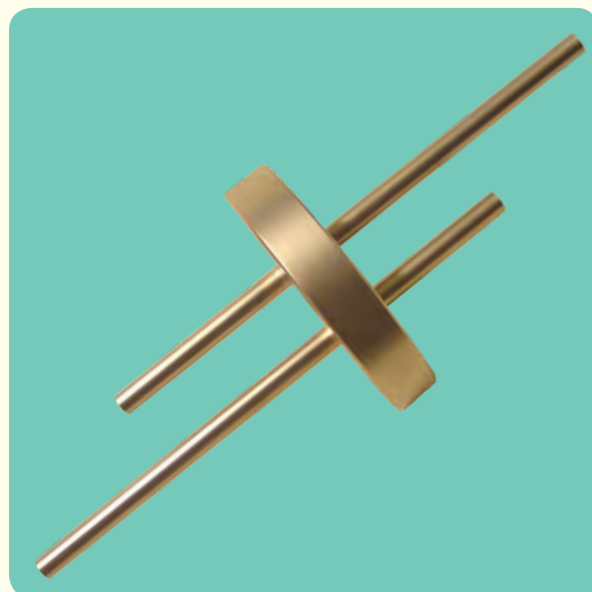
Non Cryogenic Liquid & Gas Feedthroughs

As the name suggests, these are feedthroughs, designed for allowing non cryogenic liquids and gasses into and out of your vacuum chamber, often for cooling purposes.

Cryogenic Liquid Feedthroughs

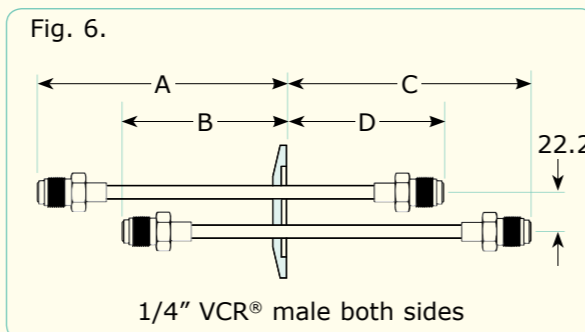
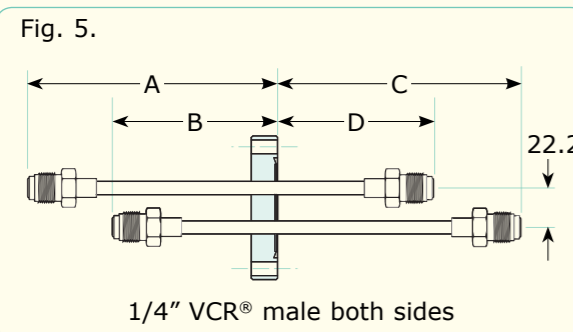
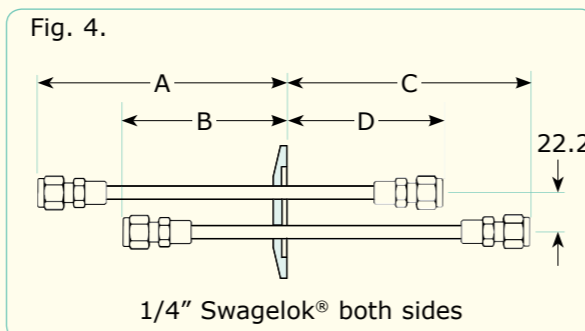
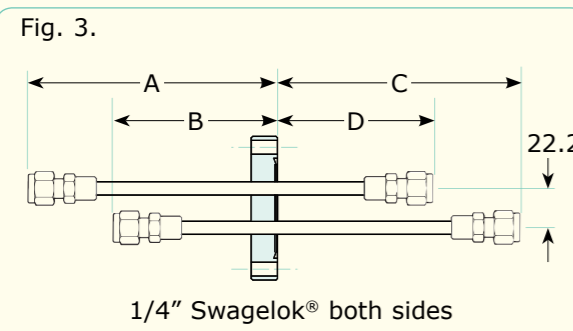
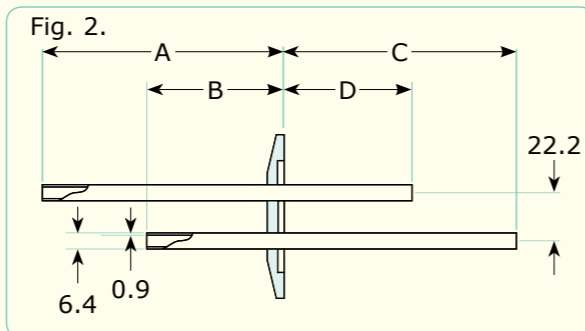
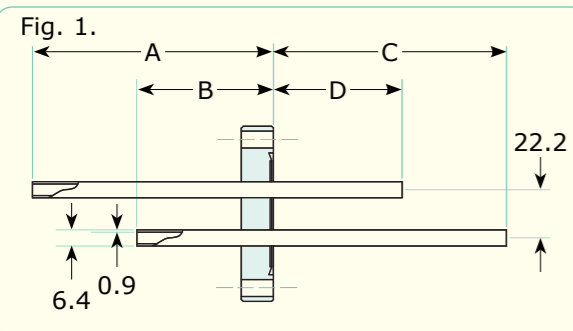
Serve the same purpose as the feedthroughs above, but have been specifically designed for passing cryogenic liquids. These feedthroughs include thermal insulation between the liquid tube and the vacuum flange, so as to minimise temperature differentials and therefore minimise any ice build up and resultant shrinkage of the vacuum flange.

Water / Gas Feedthroughs



Features:

- 304 stainless steel as standard.
- Custom sizes and designs available upon request.



Specifications:

Material

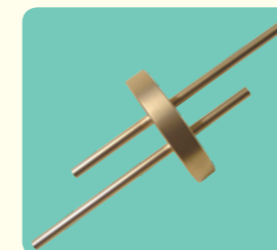
Flanges & tubes 304 St.St.

Temperature range

CF flanged -200°C to 450°C

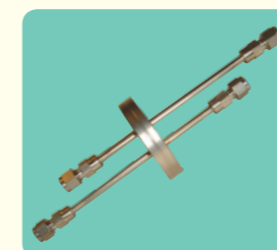
KF flanged -20°C to 150°C

Plain Tube (Weld)



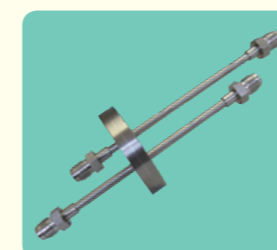
Flange	No. Tubes	Fig.	A	B	C	D	Part Code	Price £	Price €
DN16CF	1	1	101.6	-	-	50.8	FL-LF1-16CF	POA	POA
DN40CF	1	1	101.6	-	-	50.8	FL-LF1-40CF	POA	POA
DN40CF	2	1	101.6	50.8	101.6	50.8	FL-LF2-40CF	POA	POA
DN16KF	1	2	101.6	-	-	50.8	FL-LF1-16KF	POA	POA
DN25KF	1	2	101.6	-	-	50.8	FL-LF1-25KF	POA	POA
DN40KF	1	2	101.6	-	-	50.8	FL-LF1-40KF	POA	POA
DN50KF	1	2	101.6	-	-	50.8	FL-LF1-50KF	POA	POA
DN40KF	2	2	101.6	50.8	101.6	50.8	FL-LF2-40KF	POA	POA
DN50KF	2	2	101.6	50.8	101.6	50.8	FL-LF2-50KF	POA	POA

Swagelok®



Flange	No. Tubes	Fig.	A	B	C	D	Part Code	Price £	Price €
DN16CF	1	3	127.0	-	-	76.2	FL-LF1S-16CF	POA	POA
DN40CF	1	3	127.0	-	-	76.2	FL-LF1S-40CF	POA	POA
DN40CF	2	3	127.0	76.2	127.0	76.2	FL-LF2S-40CF	POA	POA
DN16KF	1	4	127.0	-	-	76.2	FL-LF1S-16KF	POA	POA
DN25KF	1	4	127.0	-	-	76.2	FL-LF1S-25KF	POA	POA
DN40KF	1	4	127.0	-	-	76.2	FL-LF1S-40KF	POA	POA
DN50KF	1	4	127.0	-	-	76.2	FL-LF1S-50KF	POA	POA
DN40KF	2	4	127.0	76.2	127.0	76.2	FL-LF2S-40KF	POA	POA
DN50KF	2	4	127.0	76.2	127.0	76.2	FL-LF2S-50KF	POA	POA

VCR®

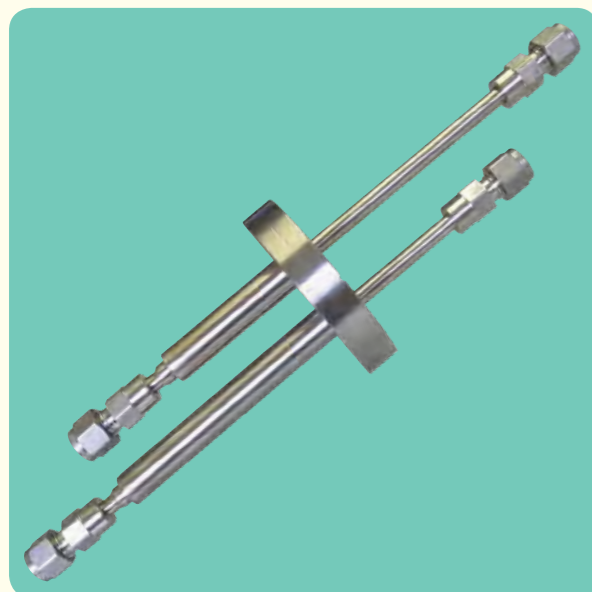


Flange	No. Tubes	Fig.	A	B	C	D	Part Code	Price £	Price €
DN40CF	1	5	127.0	-	-	76.2	FL-LF1V-40CF	POA	POA
DN40CF	2	5	127.0	76.2	127.0	76.2	FL-LF2V-40CF	POA	POA
DN25KF	1	6	127.0	-	-	76.2	FL-LF1V-25KF	POA	POA
DN40KF	1	6	127.0	-	-	76.2	FL-LF1V-40KF	POA	POA
DN50KF	1	6	127.0	-	-	76.2	FL-LF1V-50KF	POA	POA
DN40KF	2	6	127.0	76.2	127.0	76.2	FL-LF2V-40KF	POA	POA
DN50KF	2	6	127.0	76.2	127.0	76.2	FL-LF2V-50KF	POA	POA

All dimensions are nominal in millimetres unless otherwise specified

All dimensions are nominal in millimetres unless otherwise specified

Liquid Nitrogen Feedthroughs



Specifications:

Material

Flanges & tubes 304 St.St.

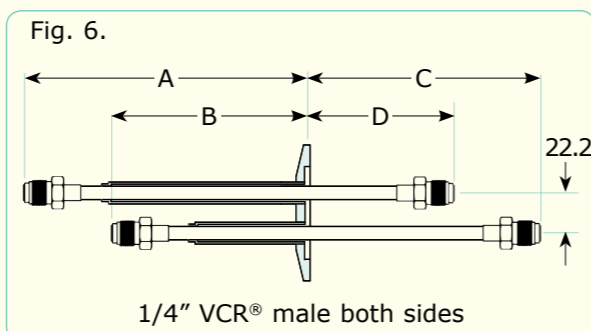
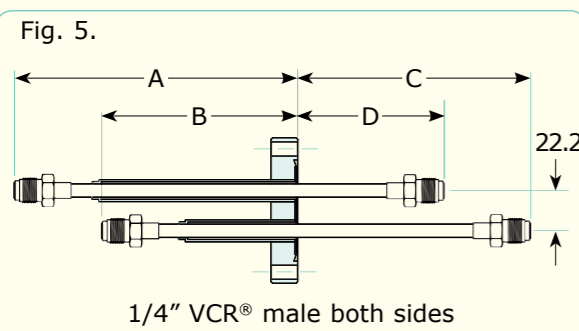
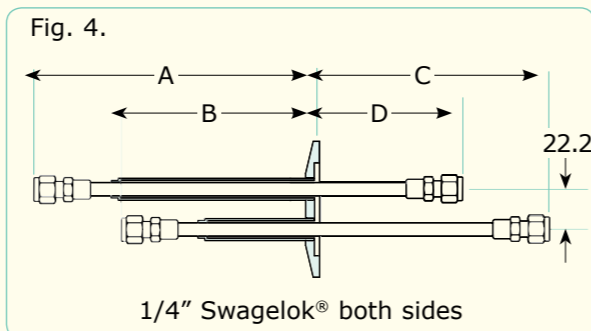
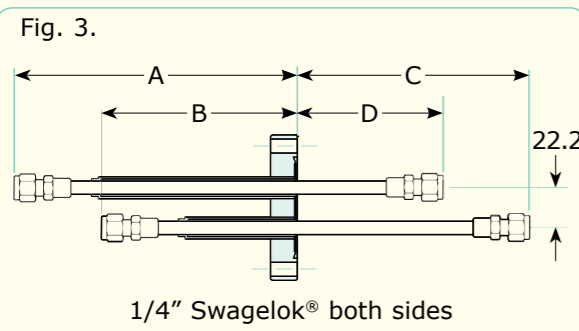
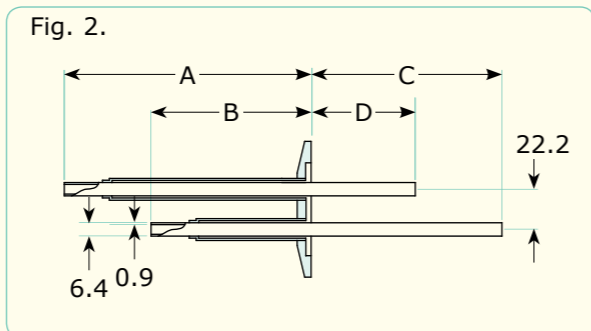
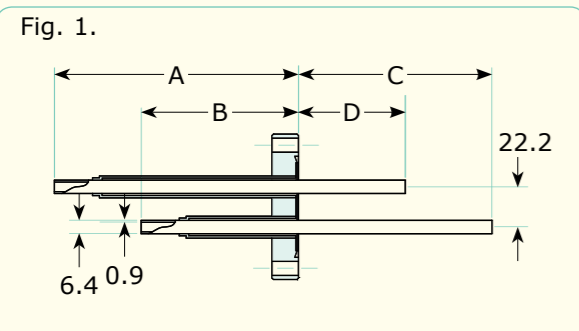
Temperature range

CF flanged -200°C to 450°C

KF flanged -20°C to 150°C

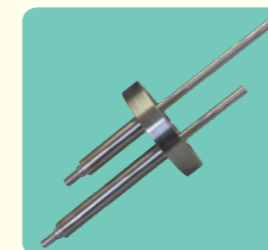
Features:

- 304 stainless steel as standard.
- Custom sizes and designs available upon request.



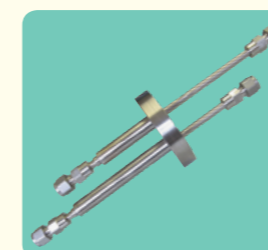
All dimensions are nominal in millimetres unless otherwise specified

Plain Tube (Weld)



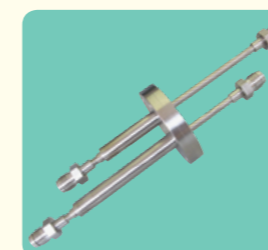
Flange	No. Tubes	Fig.	A	B	C	D	Part Code	Price £	Price €
DN16CF	1	1	127.0	-	-	50.8	FL-LNF1-16CF	POA	POA
DN40CF	1	1	127.0	-	-	50.8	FL-LNF1-40CF	POA	POA
DN40CF	2	1	127.0	76.2	101.6	50.8	FL-LNF2-40CF	POA	POA
DN16KF	1	2	127.0	-	-	50.8	FL-LNF1-16KF	POA	POA
DN25KF	1	2	127.0	-	-	50.8	FL-LNF1-25KF	POA	POA
DN40KF	1	2	127.0	-	-	50.8	FL-LNF1-40KF	POA	POA
DN50KF	1	2	127.0	-	-	50.8	FL-LNF1-50KF	POA	POA
DN40KF	2	2	127.0	76.2	101.6	50.8	FL-LNF2-40KF	POA	POA
DN50KF	2	2	127.0	76.2	101.6	50.8	FL-LNF2-50KF	POA	POA

Swagelok®



Flange	No. Tubes	Fig.	A	B	C	D	Part Code	Price £	Price €
DN16CF	1	3	152.4	-	-	76.2	FL-LNF1S-16CF	POA	POA
DN40CF	1	3	152.4	-	-	76.2	FL-LNF1S-40CF	POA	POA
DN40CF	2	3	152.4	101.6	127.0	76.2	FL-LNF2S-40CF	POA	POA
DN16KF	1	4	152.4	-	-	76.2	FL-LNF1S-16KF	POA	POA
DN25KF	1	4	152.4	-	-	76.2	FL-LNF1S-25KF	POA	POA
DN40KF	1	4	152.4	-	-	76.2	FL-LNF1S-40KF	POA	POA
DN50KF	1	4	152.4	-	-	76.2	FL-LNF1S-50KF	POA	POA
DN40KF	2	4	152.4	101.6	127.0	76.2	FL-LNF2S-40KF	POA	POA
DN50KF	2	4	152.4	101.6	127.0	76.2	FL-LNF2S-50KF	POA	POA

VCR®



Flange	No. Tubes	Fig.	A	B	C	D	Part Code	Price £	Price €
DN40CF	1	5	152.4	-	-	76.2	FL-LNF1V-40CF	POA	POA
DN40CF	2	5	152.4	101.6	127.0	76.2	FL-LNF2V-40CF	POA	POA
DN25KF	1	6	152.4	-	-	76.2	FL-LNF1V-25KF	POA	POA
DN40KF	1	6	152.4	-	-	76.2	FL-LNF1V-40KF	POA	POA
DN50KF	1	6	152.4	-	-	76.2	FL-LNF1V-50KF	POA	POA
DN40KF	2	6	152.4	101.6	127.0	76.2	FL-LNF2V-40KF	POA	POA
DN50KF	2	6	152.4	101.6	127.0	76.2	FL-LNF2V-50KF	POA	POA

All dimensions are nominal in millimetres unless otherwise specified

