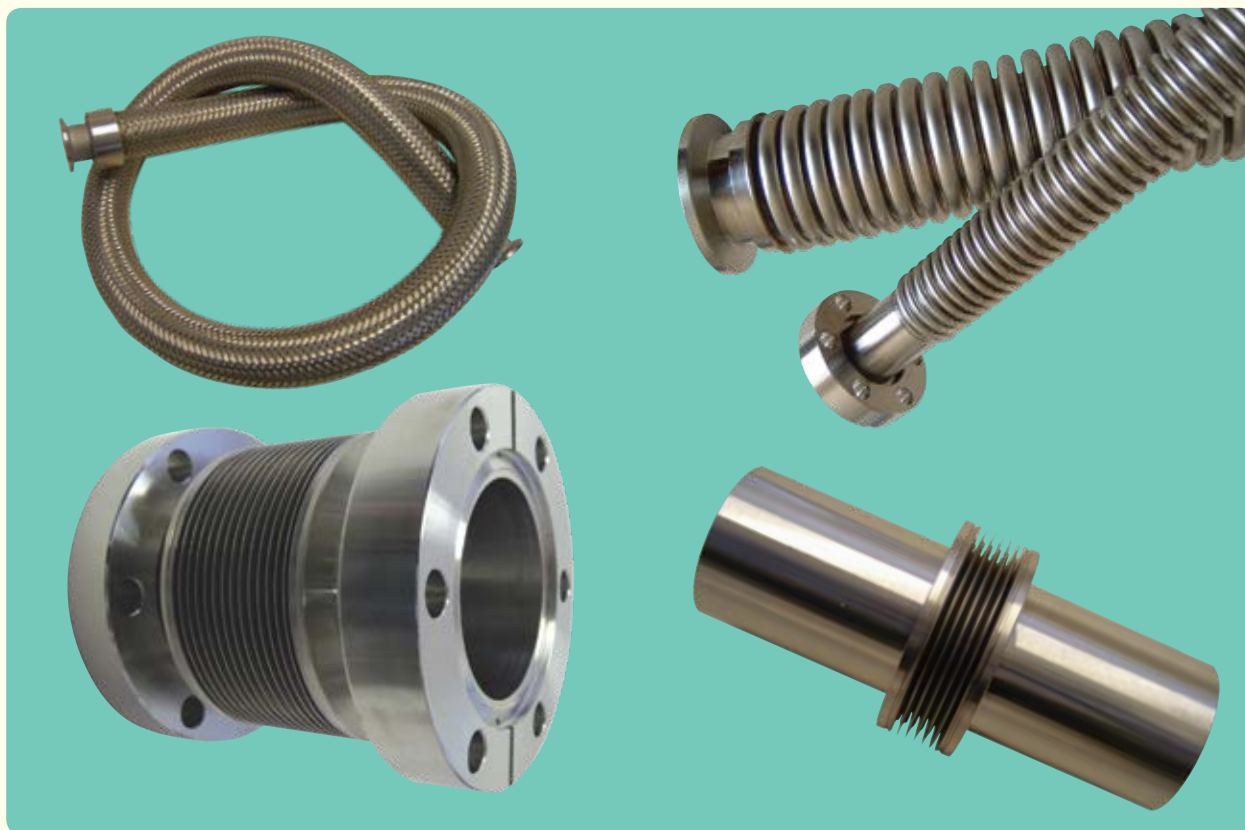


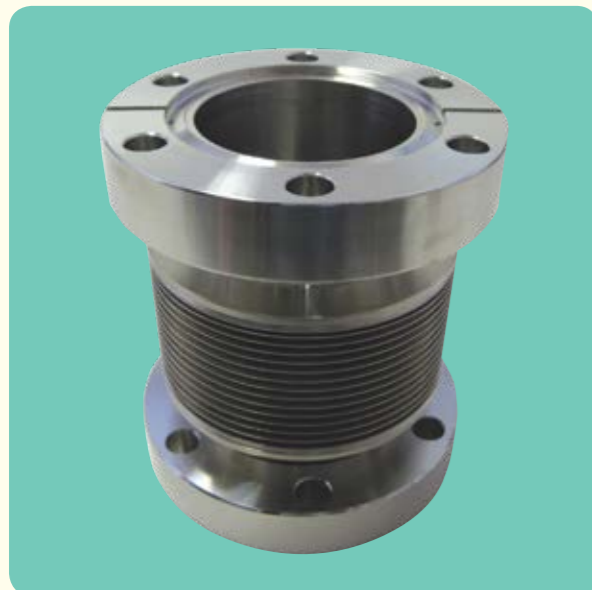
## Bellows & Flexible Hoses



LewVac supplies flexible stainless steel hoses for use in applications where solid tube would not be practical or for purposes of vibration isolation. These hoses are manufactured from thin wall tube which is corrugated to allow flexing in all directions, along with a small amount of axial compression and extension. Also available are reinforced PVC hoses for backing or exhaust lines.

For applications which require greater flexibility, particularly axial compression and extension, LewVac offer a range of edge welded bellows. Edge welded bellows are manufactured from a series of formed metal diaphragms welded together, each diaphragm contributing to the overall extension allowable, so the more discs the greater the extension attainable and also the greater the lateral offset achievable.

## Edge Welded Bellows



## Specifications:

## Material

Flanges 304 or 304L St.St.

Bellows 316L or AM350 St.St.

## Temperature Range

316L -250°C to 150°C

AM350 -75°C to 120°C

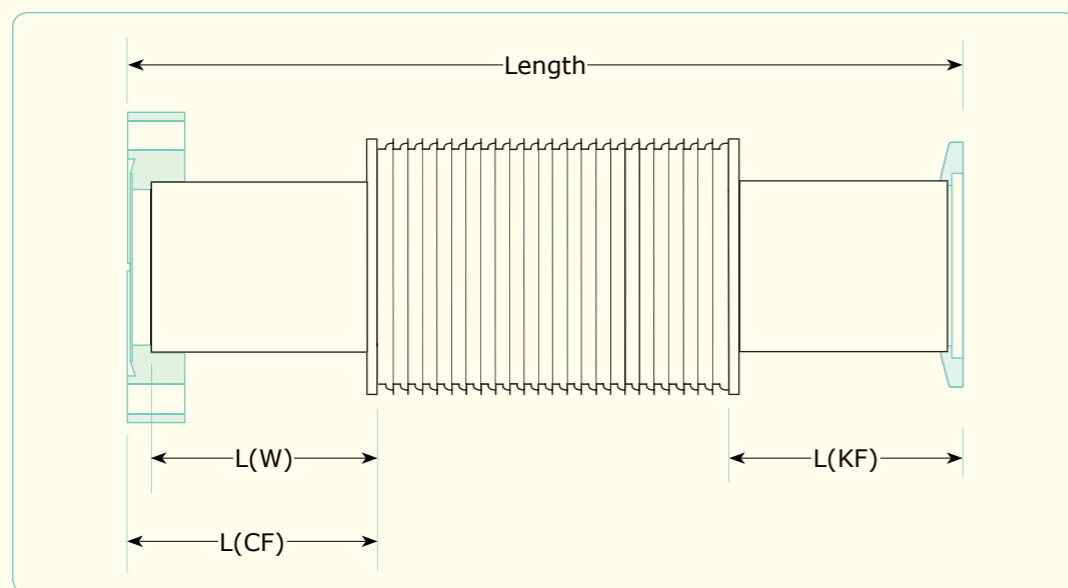
(May be limited by gasket / seal material)

## Vacuum Range

CF flanged / weldable To below  $1 \times 10^{-11}$  TorrKF & LF flanged To below  $1 \times 10^{-8}$  Torr

## Features:

- 316L stainless steel as standard for lower cycle requirement applications (typically 10,000 cycles).
- AM350 stainless steel also available for long lifetime (typically 1,000,000 cycles).
- Titanium, Inconel® or Hastelloy® available on request.
- Custom sizes and designs available upon request.



All dimensions are nominal in millimetres unless otherwise specified

## DN16



Flange Type	Through Bore	Max Bellow OD	Stroke	Extended Length	Compressed Length	L	Part Code	Price £	Price €
CF	16.0	31.5	12.1	56.4	44.3	20.0	EWB16CF-12	POA	POA
CF	16.0	31.5	25.4	74.4	49.0	20.0	EWB16CF-25	POA	POA
CF	16.0	31.5	38.7	92.5	53.8	20.0	EWB16CF-38	POA	POA
CF	16.0	31.5	50.8	108.9	58.1	20.0	EWB16CF-50	POA	POA
CF	16.0	31.5	76.2	143.3	67.1	20.0	EWB16CF-76	POA	POA
KF	16.0	31.5	12.1	44.4	32.3	42.5	EWB16KF-12	POA	POA
KF	16.0	31.5	25.4	62.4	37.0	43.0	EWB16KF-25	POA	POA
KF	16.0	31.5	38.7	80.5	41.8	43.5	EWB16KF-38	POA	POA
KF	16.0	31.5	50.8	96.9	46.1	44.0	EWB16KF-50	POA	POA
KF	16.0	31.5	76.2	131.3	55.1	44.5	EWB16KF-76	POA	POA
Weldable	16.0	31.5	12.1	48.4	36.3	16.0	EWB16W-12	POA	POA
Weldable	16.0	31.5	25.4	66.4	41.0	16.0	EWB16W-25	POA	POA
Weldable	16.0	31.5	38.7	84.5	45.8	16.0	EWB16W-38	POA	POA
Weldable	16.0	31.5	50.8	100.9	50.1	16.0	EWB16W-50	POA	POA
Weldable	16.0	31.5	76.2	135.3	59.1	16.0	EWB16W-76	POA	POA

## DN40



Flange Type	Through Bore	Max Bellow OD	Stroke	Extended Length	Compressed Length	L	Part Code	Price £	Price €
CF	38.4	59.0	12.0	74.6	62.6	30.0	EWB40CF-12	POA	POA
CF	38.4	59.0	26.0	91.7	65.7	30.0	EWB40CF-25	POA	POA
CF	38.4	59.0	38.0	106.4	68.4	30.0	EWB40CF-38	POA	POA
CF	38.4	59.0	50.0	121.0	71.0	30.0	EWB40CF-50	POA	POA
CF	38.4	59.0	76.0	152.7	76.7	30.0	EWB40CF-76	POA	POA
KF	38.4	59.0	12.0	44.6	32.6	15.0	EWB40KF-12	POA	POA
KF	38.4	59.0	26.0	61.7	35.7	15.0	EWB40KF-25	POA	POA
KF	38.4	59.0	38.0	76.4	38.4	15.0	EWB40KF-38	POA	POA
KF	38.4	59.0	50.0	91.0	41.0	15.0	EWB40KF-50	POA	POA
KF	38.4	59.0	76.0	122.7	46.7	15.0	EWB40KF-76	POA	POA
Weldable	38.4	59.0	12.0	64.0	52.0	24.7	EWB40W-12	POA	POA
Weldable	38.4	59.0	26.0	81.1	55.1	24.7	EWB40W-25	POA	POA
Weldable	38.4	59.0	38.0	95.8	57.8	24.7	EWB40W-38	POA	POA
Weldable	38.4	59.0	50.0	110.4	60.4	24.7	EWB40W-50	POA	POA
Weldable	38.4	59.0	76.0	142.1	66.1	24.7	EWB40W-76	POA	POA

All dimensions are nominal in millimetres unless otherwise specified

Edge Welded Bellows



Specifications:

Material

Flanges 304 or 304L St.St.  
Bellows 316L or AM350 St.St.

Temperature Range

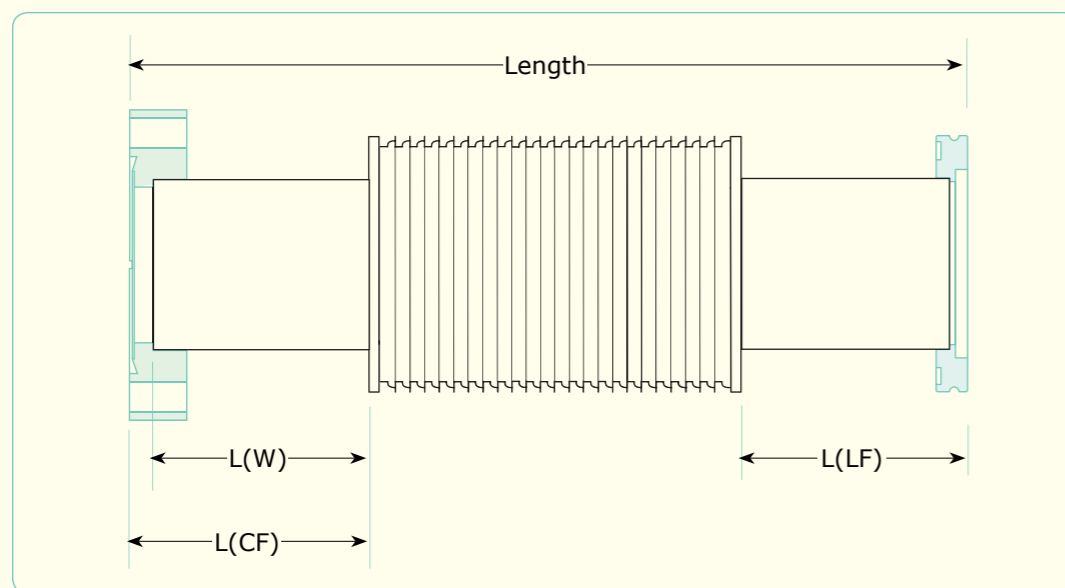
316L -250°C to 150°C  
AM350 -75°C to 120°C  
(May be limited by gasket / seal material)

Vacuum Range

CF flanged / weldable To below  $1 \times 10^{-11}$  Torr  
KF & LF flanged To below  $1 \times 10^{-8}$  Torr

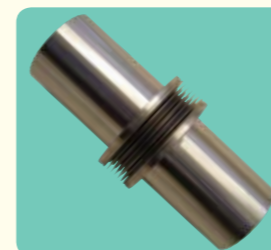
Features:

- 316L stainless steel as standard for lower cycle requirement applications (typically 10,000 cycles).
- AM350 stainless steel also available for long lifetime (typically 1,000,000 cycles).
- Titanium, Inconel® or Hastelloy® available on request.
- Custom sizes and designs available upon request.



All dimensions are nominal in millimetres unless otherwise specified

DN63



Flange Type	Through Bore	Max Bellow OD	Stroke	Extended Length	Compressed Length	L	Part Code	Price £	Price €
CF	65.0	90.0	12.7	86.2	73.5	35.0	EWB63CF-12	POA	POA
CF	65.0	90.0	25.5	102.5	77.0	35.0	EWB63CF-25	POA	POA
CF	65.0	90.0	38.3	118.8	80.5	35.0	EWB63CF-38	POA	POA
CF	65.0	90.0	51.0	135.0	84.0	35.0	EWB63CF-50	POA	POA
CF	65.0	90.0	76.5	167.5	91.0	35.0	EWB63CF-76	POA	POA
LF	65.0	90.0	12.7	86.2	73.5	35.0	EWB63LF-12	POA	POA
LF	65.0	90.0	25.5	102.5	77.0	35.0	EWB63LF-25	POA	POA
LF	65.0	90.0	40.5	118.8	78.3	35.0	EWB63LF-38	POA	POA
LF	65.0	90.0	54.0	135.0	81.0	35.0	EWB63LF-50	POA	POA
LF	65.0	90.0	76.5	167.5	91.0	35.0	EWB63LF-76	POA	POA
Weldable	65.0	90.0	12.7	67.2	54.5	25.5	EWB63W-12	POA	POA
Weldable	65.0	90.0	25.5	83.5	58.0	25.5	EWB63W-25	POA	POA
Weldable	65.0	90.0	38.3	99.8	61.5	25.5	EWB63W-38	POA	POA
Weldable	65.0	90.0	51.0	116.0	65.0	25.5	EWB63W-50	POA	POA
Weldable	65.0	90.0	76.5	148.5	72.0	25.5	EWB63W-76	POA	POA

DN100



Flange Type	Through Bore	Max Bellow OD	Stroke	Extended Length	Compressed Length	L	Part Code	Price £	Price €
CF	102.0	132.0	12.0	94.6	82.6	40.0	EWB100CF-12	POA	POA
CF	102.0	132.0	26.9	112.8	85.9	40.0	EWB100CF-25	POA	POA
CF	102.0	132.0	38.9	127.4	88.5	40.0	EWB100CF-38	POA	POA
CF	102.0	132.0	51.0	142.0	91.0	40.0	EWB100CF-50	POA	POA
CF	102.0	132.0	78	174.9	96.9	40.0	EWB100CF-76	POA	POA
LF	102.0	132.0	12.0	94.6	82.6	40.0	EWB100LF-12	POA	POA
LF	102.0	132.0	26.9	112.8	85.9	40.0	EWB100LF-25	POA	POA
LF	102.0	132.0	38.9	127.4	88.5	40.0	EWB100LF-38	POA	POA
LF	102.0	132.0	51.0	142.0	91.0	40.0	EWB100LF-50	POA	POA
LF	102.0	132.0	78	174.9	96.9	40.0	EWB100LF-76	POA	POA
Weldable	102.0	132.0	12.0	72.4	60.4	28.9	EWB100W-12	POA	POA
Weldable	102.0	132.0	26.9	90.6	63.7	28.9	EWB100W-25	POA	POA
Weldable	102.0	132.0	38.9	105.2	66.3	28.9	EWB100W-38	POA	POA
Weldable	102.0	132.0	51.0	119.8	68.8	28.9	EWB100W-50	POA	POA
Weldable	102.0	132.0	78	152.7	74.7	28.9	EWB100W-76	POA	POA

DN160



Flange Type	Through Bore	Max Bellow OD	Stroke	Extended Length	Compressed Length	L	Part Code	Price £	Price €
CF	150.0	185.0	27.2	123.2	96.0	45.0	EWB160CF-25	POA	POA
LF	150.0	185.0	27.2	123.2	96.0	45.0	EWB160LF-25	POA	POA
Weldable	150.0	185.0	27.2	97.8	70.6	32.3	EWB160W-25	POA	POA

All dimensions are nominal in millimetres unless otherwise specified

## Formed Bellows - Weldable



## Specifications:

## Material

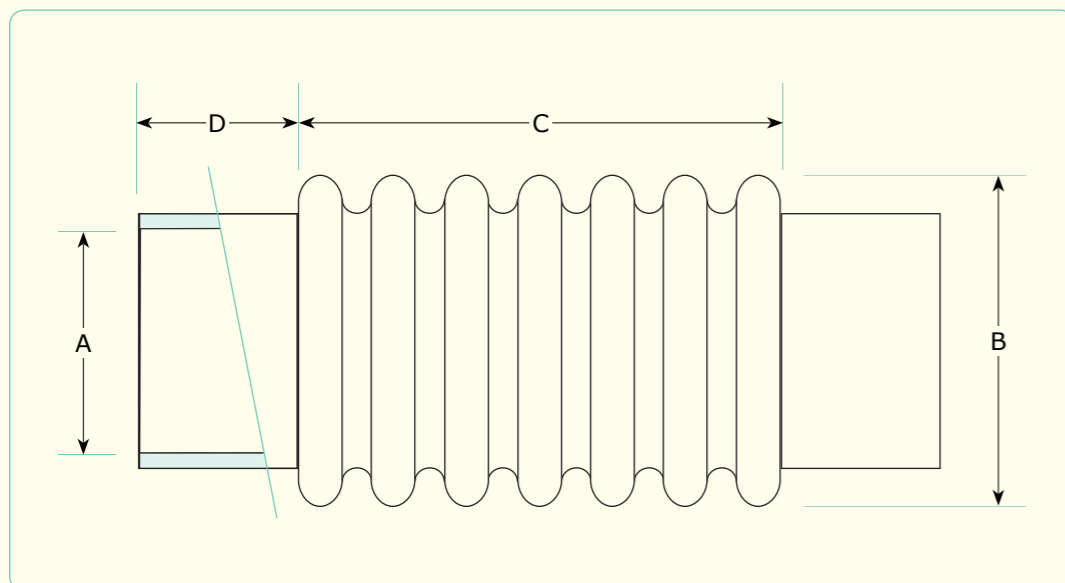
321 St.St.

## Temperature Range

-250°C to 450°C

## Features:

- Type 321 stainless steel as standard.
- Highly flexible.
- Flanged versions available upon request.
- Custom sizes and designs available upon request.



## Weldable Formed Bellows



A	B	C	D	Wall Thickness	Axial Deflection +/-	Part Code	Price £	Price €
6.35	9.40	25.40	12.70	0.13	+2.54 / -6.35	FL-FB6.35	POA	POA
7.93	11.68	25.40	12.70	0.13	+2.54 / -6.35	FL-FB7.93	POA	POA
9.52	14.48	38.10	12.70	0.13	+3.81 / -9.40	FL-FB9.52	POA	POA
12.70	19.05	38.10	12.70	0.15	+3.81 / -9.40	FL-FB12.70	POA	POA
15.87	22.10	38.10	12.70	0.15	+3.81 / -9.40	FL-FB15.87	POA	POA
19.05	26.42	38.10	12.70	0.15	+3.81 / -9.40	FL-FB19.05	POA	POA
22.22	31.75	50.80	12.70	0.15	+5.08 / -12.70	FL-FB22.22	POA	POA
25.40	34.80	50.80	19.05	0.15	+5.08 / -12.70	FL-FB25.40	POA	POA
28.57	37.08	50.80	19.05	0.15	+5.08 / -12.70	FL-FB28.57	POA	POA
31.75	40.64	50.80	19.05	0.15	+5.08 / -12.70	FL-FB31.75	POA	POA
34.92	45.97	50.80	19.05	0.15	+5.08 / -12.70	FL-FB34.92	POA	POA
38.10	48.26	50.80	19.05	0.15	+5.08 / -12.70	FL-FB38.10	POA	POA
41.27	52.07	50.80	19.05	0.15	+5.08 / -12.70	FL-FB41.27	POA	POA
44.45	56.90	50.80	19.05	0.15	+5.08 / -12.70	FL-FB44.45	POA	POA
50.80	63.25	63.50	19.05	0.15	+6.35 / -15.24	FL-FB50.80	POA	POA
57.15	71.37	63.50	19.05	0.15	+6.35 / -15.24	FL-FB57.15	POA	POA
63.50	75.69	63.50	19.05	0.15	+6.35 / -15.24	FL-FB63.50	POA	POA
76.20	95.76	76.20	25.40	0.20	+7.62 / -19.05	FL-FB76.20	POA	POA
88.90	109.2	88.90	25.40	0.20	+8.89 / -22.10	FL-FB88.90	POA	POA
101.6	121.4	101.6	25.40	0.20	+10.16 / -25.40	FL-FB101.6	POA	POA
114.3	134.1	101.6	25.40	0.20	+10.16 / -25.40	FL-FB114.3	POA	POA
127.0	146.1	127.0	25.40	0.20	+12.7 / -31.75	FL-FB127.0	POA	POA
152.4	174.0	127.0	31.75	0.25	+12.7 / -31.75	FL-FB152.4	POA	POA
203.2	235.0	152.4	31.75	0.51	+15.25 / -38.10	FL-FB203.2	POA	POA
254.0	287.3	152.4	31.75	0.51	+15.25 / -38.10	FL-FB254.0	POA	POA
304.8	352.6	152.4	31.75	0.51	+15.25 / -38.10	FL-FB304.8	POA	POA

- Through ID of bellows is approximately 95% of cuff ID.
- Axial deflection is approximately +10% and -25% of length, C.
- Lateral deflection is approximately 10% of length, C.

**Please note :** A minimum order quantity may apply to some of these items. Please contact our sales office for further details.



## Flexible Hoses



## Specifications:

## Material

Hose - 316L St.St.  
Flanges - 304 St.St.

## Temperature Range

CF flanged -250°C to 450°C  
KF flanged -20°C to 150°C (200°C\*)

## Vacuum Range

CF flanged To below  $1 \times 10^{-11}$  Torr  
KF flanged To below  $1 \times 10^{-8}$  Torr

\* - Increased upper limit for intermittent use.

## Features:

- 316L stainless steel hose as standard.
- 304 stainless steel flanges as standard.
- Highly flexible.
- Custom sizes and designs available upon request.

Fig. 1.

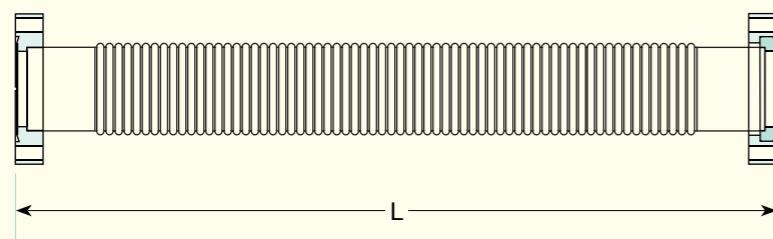
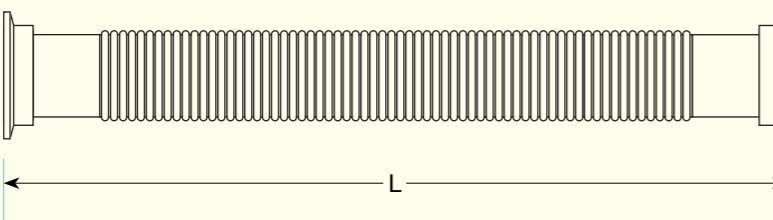


Fig. 2.



All dimensions are nominal in millimetres unless otherwise specified

## CF Flanged Hoses



Braided flexible hoses are also available, please contact sales office for details.

Flange	Fig.	L	Part Code	Price £	Price €
DN16CF	1	250	FL-H250-16CF	£67	€78
DN16CF	1	500	FL-H500-16CF	£72	€83
DN16CF	1	750	FL-H750-16CF	£76	€88
DN16CF	1	1000	FL-H1000-16CF	£81	€94
DN40CF	1	250	FL-H250-40CF	£83	€96
DN40CF	1	500	FL-H500-40CF	£89	€103
DN40CF	1	750	FL-H750-40CF	£96	€111
DN40CF	1	1000	FL-H1000-40CF	£102	€118
DN63CF	1	500	FL-H500-63CF	£233	€268
DN63CF	1	750	FL-H750-63CF	£251	€289
DN63CF	1	1000	FL-H1000-63CF	£269	€310
DN100CF	1	500	FL-H500-100CF	POA	POA
DN100CF	1	750	FL-H750-100CF	POA	POA
DN100CF	1	1000	FL-H1000-100CF	£413	€475
DN160CF	1	500	FL-H500-160CF	£453	€521
DN160CF	1	750	FL-H750-160CF	£502	€578
DN160CF	1	1000	FL-H1000-160CF	£551	€634

## KF Flanged Hoses



Braided flexible hoses are also available, please contact sales office for details.

Flange	Fig.	L	Part Code	Price £	Price €
DN10KF	2	250	FL-H250-10KF	£60	€69
DN10KF	2	500	FL-H500-10KF	£68	€79
DN10KF	2	750	FL-H750-10KF	£77	€89
DN10KF	2	1000	FL-H1000-10KF	£85	€98
DN10KF	2	1500	FL-H1500-10KF	£102	€118
DN10KF	2	2000	FL-H2000-10KF	£125	€144
DN16KF	2	250	FL-H250-16KF	£31	€36
DN16KF	2	500	FL-H500-16KF	£36	€42
DN16KF	2	750	FL-H750-16KF	£42	€49
DN16KF	2	1000	FL-H1000-16KF	£47	€55
DN16KF	2	1500	FL-H1500-16KF	£52	€60
DN16KF	2	2000	FL-H2000-16KF	£59	€68
DN25KF	2	250	FL-H250-25KF	£33	€38
DN25KF	2	500	FL-H500-25KF	£38	€44
DN25KF	2	750	FL-H750-25KF	£43	€50
DN25KF	2	1000	FL-H1000-25KF	£50	€58
DN25KF	2	1500	FL-H1500-25KF	£57	€66
DN25KF	2	2000	FL-H2000-25KF	£65	€75
DN40KF	2	250	FL-H250-40KF	£41	€48
DN40KF	2	500	FL-H500-40KF	£49	€57
DN40KF	2	750	FL-H750-40KF	£58	€67
DN40KF	2	1000	FL-H1000-40KF	£67	€78
DN40KF	2	1500	FL-H1500-40KF	£76	€88
DN40KF	2	2000	FL-H2000-40KF	£85	€98
DN50KF	2	250	FL-H250-50KF	£59	€68
DN50KF	2	500	FL-H500-50KF	£71	€82
DN50KF	2	750	FL-H750-50KF	£83	€96
DN50KF	2	1000	FL-H1000-50KF	£91	€105
DN50KF	2	1500	FL-H1500-50KF	£99	€114
DN50KF	2	2000	FL-H2000-50KF	£107	€124

All dimensions are nominal in millimetres unless otherwise specified

Flexible Hoses



Specifications:

Material

Hose - 316L St.St.  
Flanges - 304 St.St.

Temperature Range

-20°C to 150°C (200°C\*)

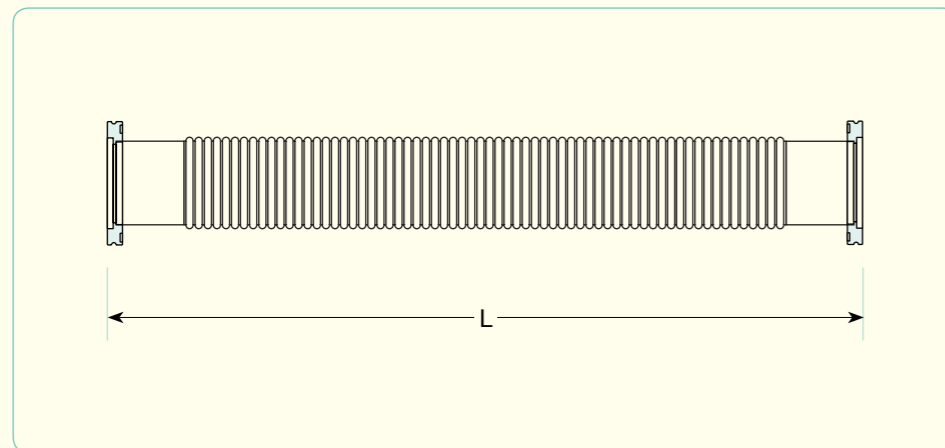
Vacuum Range

To below  $1 \times 10^{-8}$  Torr

\* - Increased upper limit for intermittent use.

Features:

- 304 stainless steel as standard.
- Highly flexible.
- Custom sizes and designs available upon request.



All dimensions are nominal in millimetres unless otherwise specified

LF Flanged Hoses



Braided flexible hoses are also available, please contact sales office for details.

Flange	L	Part Code	Price £	Price €
DN63LF	500	FL-H500-63LF	£153	€176
DN63LF	750	FL-H750-63LF	£164	€189
DN63LF	1000	FL-H1000-63LF	£174	€201
DN63LF	2000	FL-H2000-63LF	£272	€313
DN100LF	125	FL-H125-100LF	POA	POA
DN100LF	250	FL-H250-100LF	£207	€239
DN100LF	500	FL-H500-100LF	£218	€251
DN100LF	750	FL-H750-100LF	£229	€264
DN100LF	1000	FL-H1000-100LF	£240	€276
DN160LF	500	FL-H500-160LF	POA	POA
DN160LF	750	FL-H750-160LF	POA	POA
DN160LF	1000	FL-H1000-160LF	POA	POA

All dimensions are nominal in millimetres unless otherwise specified

